

Instruction: This is an in class assignment.

Member:

1. Name: _____ Code: _____

1. Find V_o in the circuit in Fig. 1.

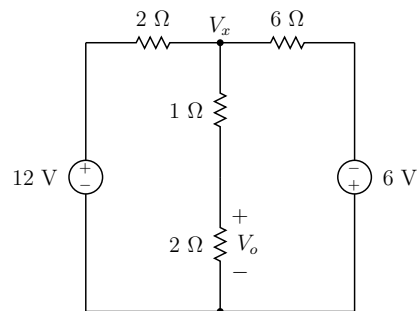


Figure 1: Resistive circuit

2. Determine the voltage V_o in the circuit in Fig. 2

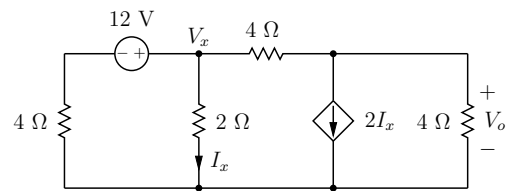


Figure 2: Resistive circuit

3. Find the value of v_{out} of the ideal Op-Amp circuit shown in Fig. 3

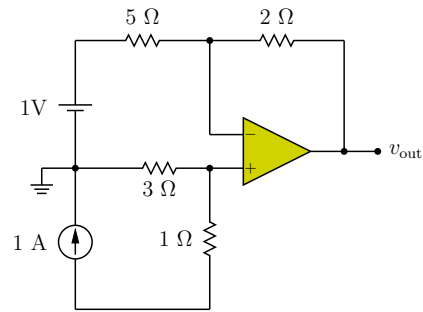


Figure 3: Ideal Op-Amp circuit